

**RESOLUTION OF THE BOARD OF TRUSTEES
OF THE JUDSON INDEPENDENT SCHOOL DISTRICT**

WHEREAS, the Judson Independent School District's ("Judson ISD" or "the District") election system consists of five single-member trustee districts and two at large places in accordance with District policy BBB (Legal) and (Local); and

WHEREAS, Texas Education Code § 11.052(i) provides that the District must re-evaluate its single-member trustee districts following the availability of the most current Decennial Census; and

WHEREAS, the Fourteenth and Fifteenth Amendments to the United States Constitution, and Texas Education Code § 11.052(i) require that, based on the current Decennial Census data, if the total population residing in Judson ISD's most populous single-member district exceeds the total population residing in its least populous single-member district by a deviation of ten percent or more, the District must revise the boundaries of its single-member trustee districts to bring the deviation under ten percent; and

WHEREAS, the total population of Judson ISD's single-member trustee district 1 exceeds the total population of single-member trustee district 4 by a deviation of 32.1% based on the Federal Census data of 2020; and

WHEREAS, Texas Education Code § 11.053(a) permits the Board of Trustees of an independent school district to provide for trustees in office when the redistricting plan is adopted to serve for the remainder of their terms; and

WHEREAS, the Judson ISD Board of Trustees consists of the following members: Jennifer Rodríguez, Rafael Diaz Martinez, Jr., Debra Eaton, Suzanne Kenoyer, Shatonya King, José A. Macias, Jr., and Renée A. Paschall.

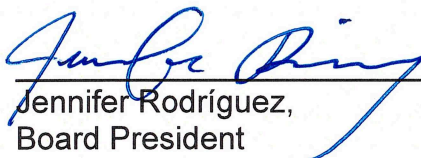
WHEREAS, the Judson ISD Board of Trustees held a regular Board meeting on January 19, 2023 to discuss the 2020 census information and the redistricting guidelines and process; and

WHEREAS, on January 4th, January 5th, January 9th, January 10th, and January 11th, the Judson ISD Board of Trustees held town hall community meetings and offered the opportunity for community input at the meetings by providing time for public comment to address the redistricting Plan attached to this resolution.

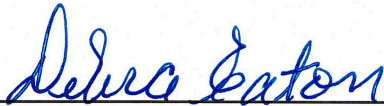
BE IT THEREFORE RESOLVED that changes set out herein are adopted as follows:

1. The boundaries of the single-member trustee election districts are re-drawn as shown in the maps for the Plan attached hereto as **Exhibit A**, to include the population statistics under the re-drawn boundaries as shown, with a 5.1% population differential from the largest populated single member district 2 compared to the smallest populated single member district 1.
2. This Resolution shall take and be given effect immediately, and implementation of the attached Plan shall begin with the next general election of the Board of Trustees of the Judson Independent School District and shall apply to all subsequent general elections of the Board until such time a subsequent lawfully enacted redistricting plan is adopted by the Board.
3. Pursuant to Texas Education Code § 11.053(a), the trustees currently in office shall serve out the remainder of their terms.

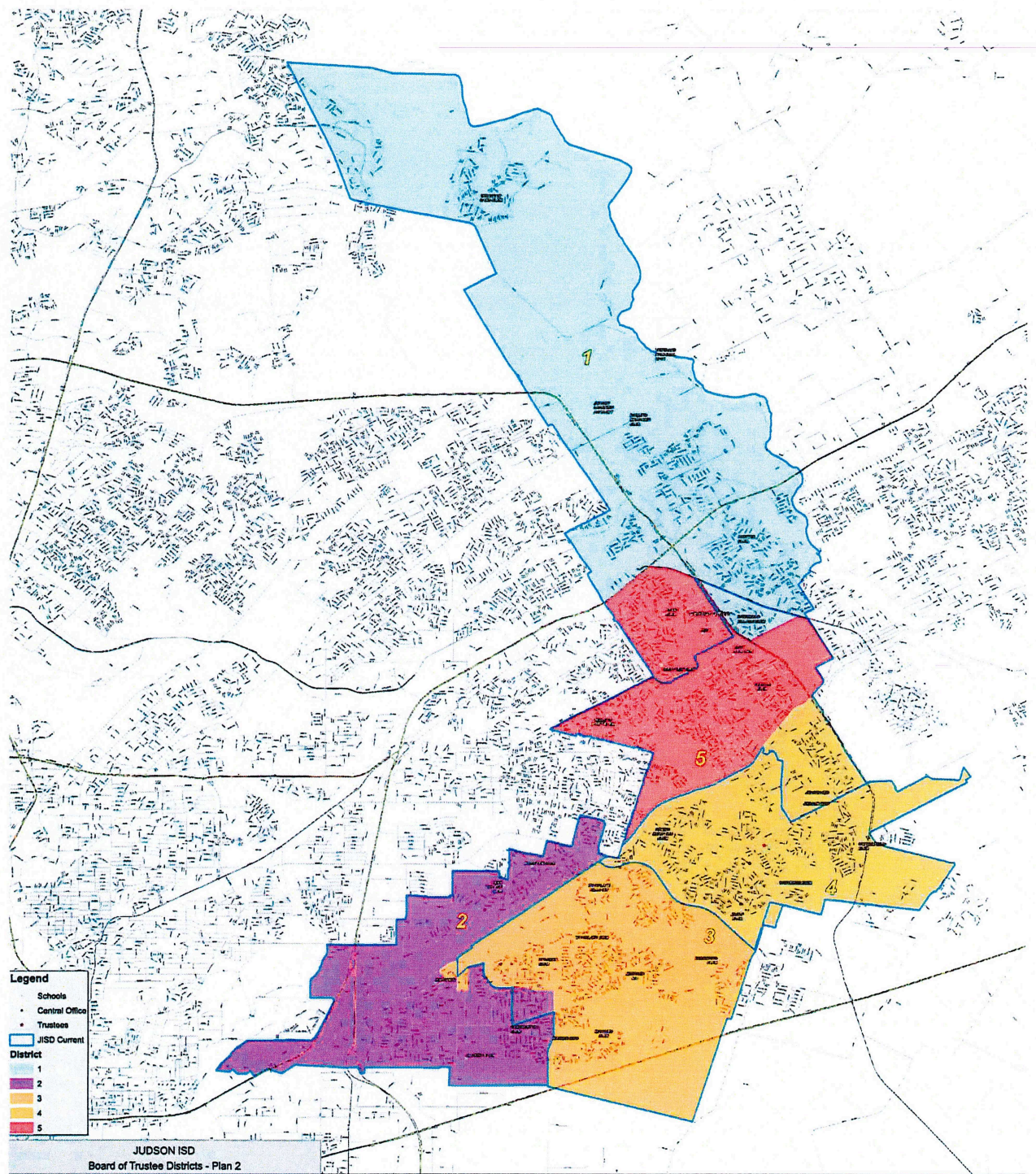
Resolved this 19th day of January 2023.



Jennifer Rodríguez,
Board President
Board of Trustees



Debra Eaton,
Board Secretary
Board of Trustees



Judson ISD Plan 2 Demographics

JUDSON INDEPENDENT SCHOOL DISTRICT

2020 CENSUS TOTALS - PLAN 2

TOTAL POPULATION					TOTAL POPULATION PERCENTAGES					
	Black	Hispanic	Other	Total	Anglo	Asian	Black	Hispanic	Other	Total
88	3,052	11,099	1,562	28,750	40.5%	4.8%	10.6%	38.6%	5.4%	100.0%
48	5,463	18,121	917	30,219	16.4%	2.5%	18.1%	60.0%	3.0%	100.0%
42	7,729	13,774	1,572	29,401	18.3%	3.2%	26.3%	46.8%	5.3%	100.0%
66	7,142	12,805	1,678	28,934	22.6%	2.6%	24.7%	44.3%	5.8%	100.0%
73	3,876	13,279	1,649	30,065	34.2%	3.2%	12.9%	44.2%	5.5%	100.0%
17	27,262	69,078	7,378	147,369	26.4%	3.3%	18.5%	46.9%	5.0%	100.0%
5 DIST AVG					29,474 5.1% Percent Differential *					

VOTING AGE POPULATION (VAP) PERCENTAGES					CITIZEN VOTING AGE POPULATION (CVAP) PERCENTAGES					
	Black	Hispanic	Other	Total	Anglo	Asian	Black	Hispanic	Other	Total
2%	10.7%	35.2%	4.7%	100.0%	46.6%	4.4%	12.5%	33.8%	2.7%	100%
0%	17.7%	57.1%	2.8%	100.0%	24.2%	2.6%	21.6%	50.0%	1.6%	100%
3%	27.0%	43.9%	4.8%	100.0%	22.8%	2.4%	33.1%	40.5%	1.2%	100%
2%	25.5%	41.0%	5.0%	100.0%	28.0%	2.8%	28.9%	36.9%	3.4%	100%
7%	13.1%	40.3%	4.8%	100.0%	45.1%	1.5%	16.2%	32.9%	4.3%	100%
7%	18.6%	43.4%	4.4%	100.0%	34.0%	2.7%	21.9%	38.6%	2.7%	100%

Population summarized from 2020 Census PL 94-171 Redistricting Data at the block level.

Population interpolated from 2010 Block Group Data using the 2015-2019 American Community Survey